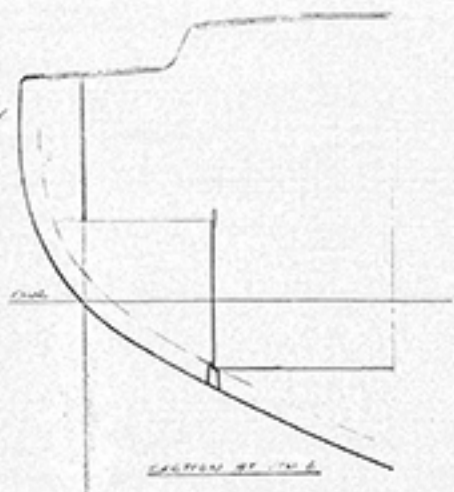
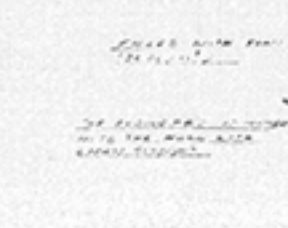
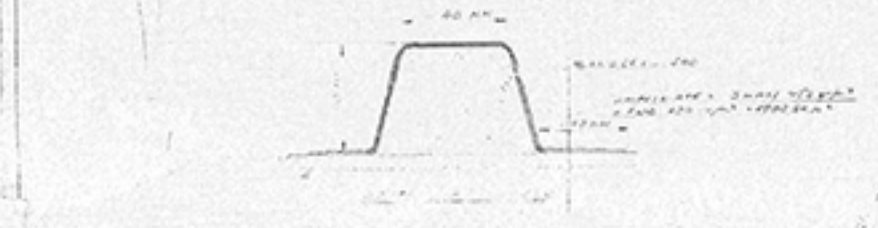
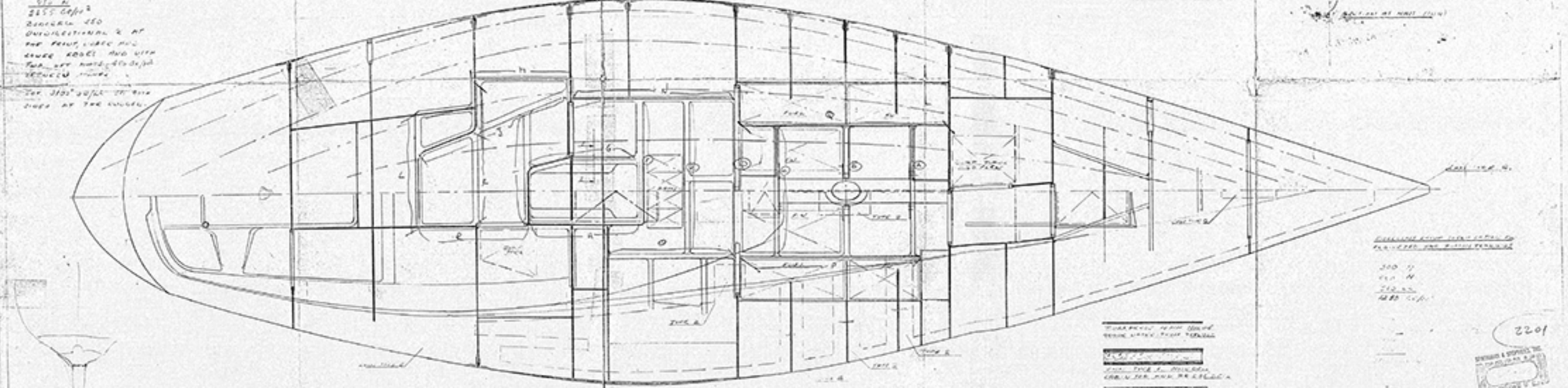
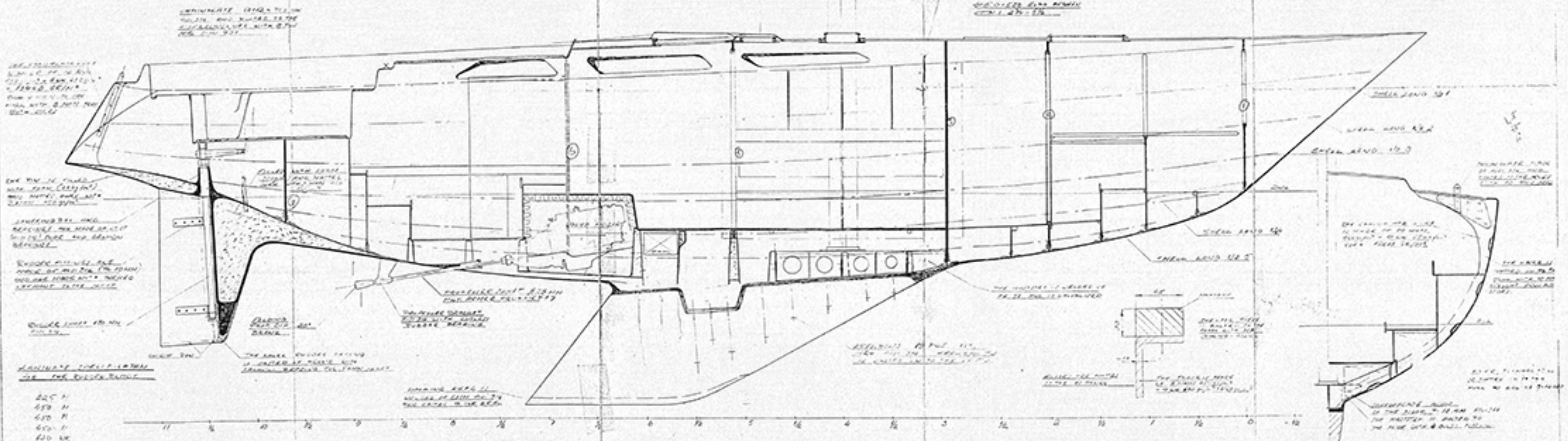
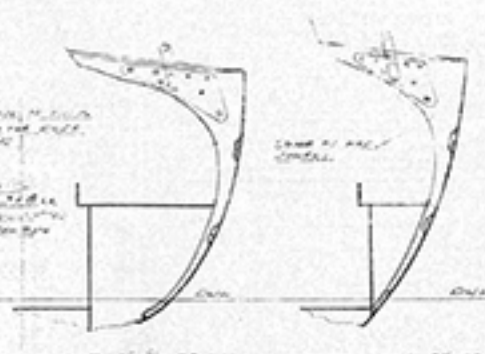


SMALL BOWMAN'S CABIN
IS LOCATED IN
THE BOW OF THE
SUBMERSIBLE



THE HULL STRUCTURE IS
DESIGNED TO WITHSTAND
EXTERNAL PRESSURES
UP TO 100 PSI. THE
HULL IS MADE OF
STEEL WITH A TENSILE
STRENGTH OF 60,000
PSI.



THIS PLAN IS TO BE REPRODUCED
EXACTLY AS SHOWN
AND NOT TO BE
ALTERED IN ANY
MANNER WITHOUT THE
APPROVAL OF THE
NAVY DEPARTMENT.

DO NOT REPRODUCE
THIS PLAN IN ANY
MANNER WITHOUT THE
APPROVAL OF THE
NAVY DEPARTMENT.

2201